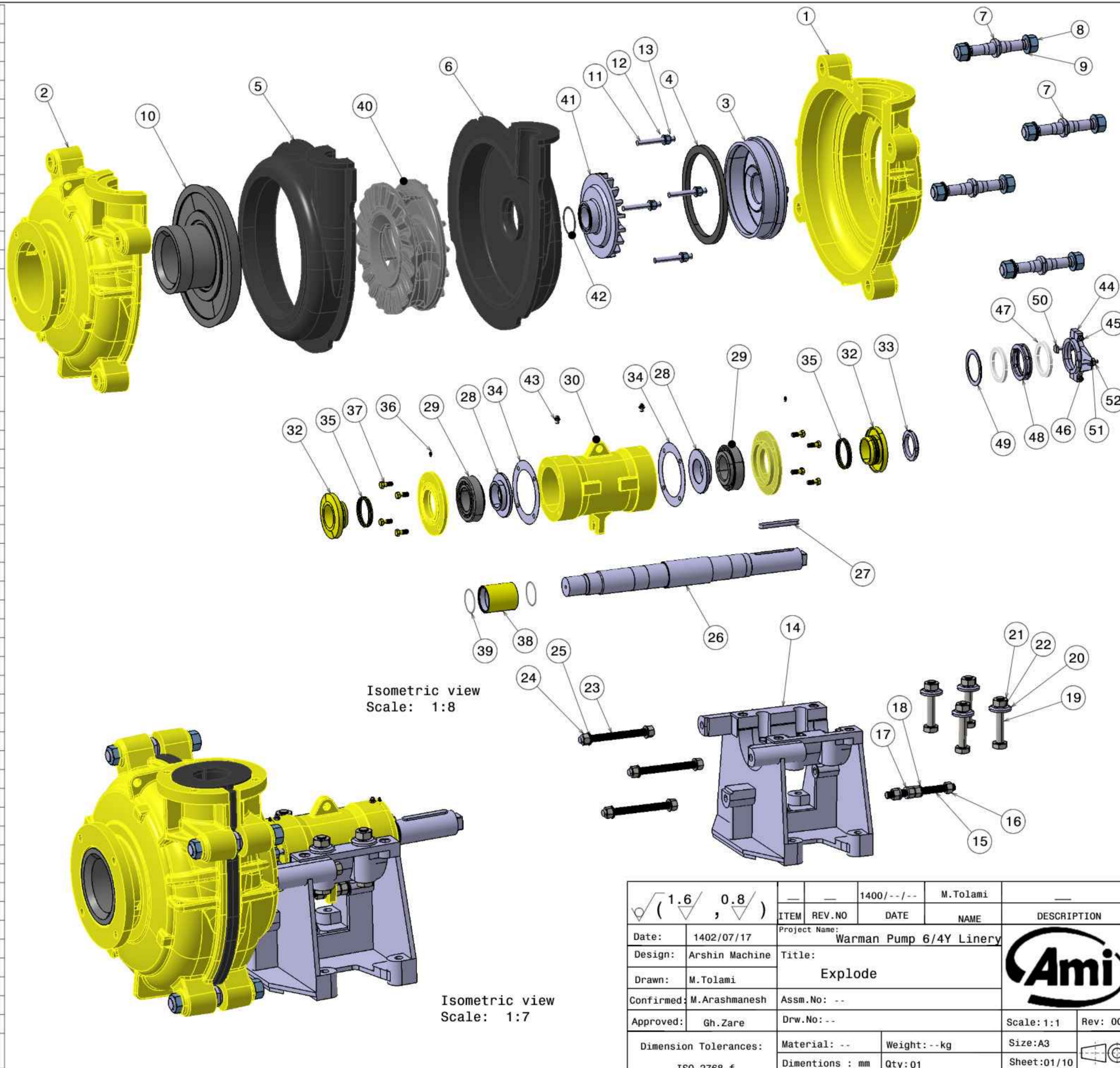


52	Nut M12	2	DIN934
51	Washer 12*24	2	DIN125
50	Gland Bolt 30 65	2	Mo40
49	Neck Ring 108 84 3	1	St52
48	Lantern 108 84 21	1	St52
47	Packing 12*12	2	Cotton
46	Nut M8	2	DIN934
45	Bolt M8*70	2	DIN933
44	Gland 107 74 13	2	GG25
43	Grease Nipple 10	2	St37
42	ORing 86*5	1	NR
41	Expeller 256 70 54	1	Hi-Cr
40	Rubbred Impeller 394 155	1	NR
39	ORing 76*3	2	NR
38	Bush Sleeve 83 70 95	1	St52-200 Micron Chrome
37	Bolt M12*35	8	DIN933
36	Grease Nipple 6	2	St37
35	Labyrinth Ring 90 83 3	4	GGG40
34	Shim Set 190 140	2	Paper/Bra ss
33	Lock Nut 92 70 12	1	St52
32	Labyrinth 136 71 46	2	GG25
31	End Cover 191 90 32	2	GG25
30	Bearing Housing 136 306	1	GG25
29	Bearing 645 632	2	Koyo
28	Grease Retainer 133 72 26	2	GG25
27	Key 18 11 130	1	St37
26	Drive Shaft 79 783	1	CK45
25	Washer 20*37	6	DIN125
24	Nut M20	6	DIN934
23	Bolt M20L240	3	DIN976
22	Spring Washer 24	4	DIN127
21	Nut M24	4	DN934
20	Clamp Washer 67 25 10	4	St37
19	Bolt M24*140	4	DIN933
18	Washer 20*37	1	DIN125
17	Washer 35 21 5	2	St37
16	Nut M20	4	DIN934
15	Bolt M20L220	1	DIN976
14	Frame 291 194	1	St37
13	Nut M16	4	DIN934
12	Washer 16*30	4	DIN125
11	Bolt M16L120	4	DIN976
10	Rubbered Throat Bush 430	1	NR
9	Washer 30*56	8	DIN125
8	Nut 30	8	DIN934
7	Cover Bolt 54 263	4	Ck45
6	Frame Plate Liner 6/4	1	NR
5	Cover Plate Liner 6/4	1	NR
4	Expeller Ring Seal 294 254 14	1	NR
3	Expeller Ring 108 295	1	Hi-Cr
2	Cover Plate 6/4 Y	1	GGG40
1	Frame Plate 6/4Y	1	GGG40
Item No.	Part Name	QTY	Material/ Standard



ITEM	REV.NO	DATE	NAME	DESCRIPTION
Date: 1402/07/17		Project Name: Warman Pump 6/4Y Linery		
Design: Arshin Machine		Title: Explode		
Drawn: M.Tolami		Assm.No: --		
Confirmed: M.Arashmanesh		Drw.No: --		
Approved: Gh.Zare				Scale: 1:1
Dimension Tolerances: ISO 2768-f		Material: --	Weight: -- kg	Size: A3
		Dimentions : mm	Qty: 01	Sheet: 01/10