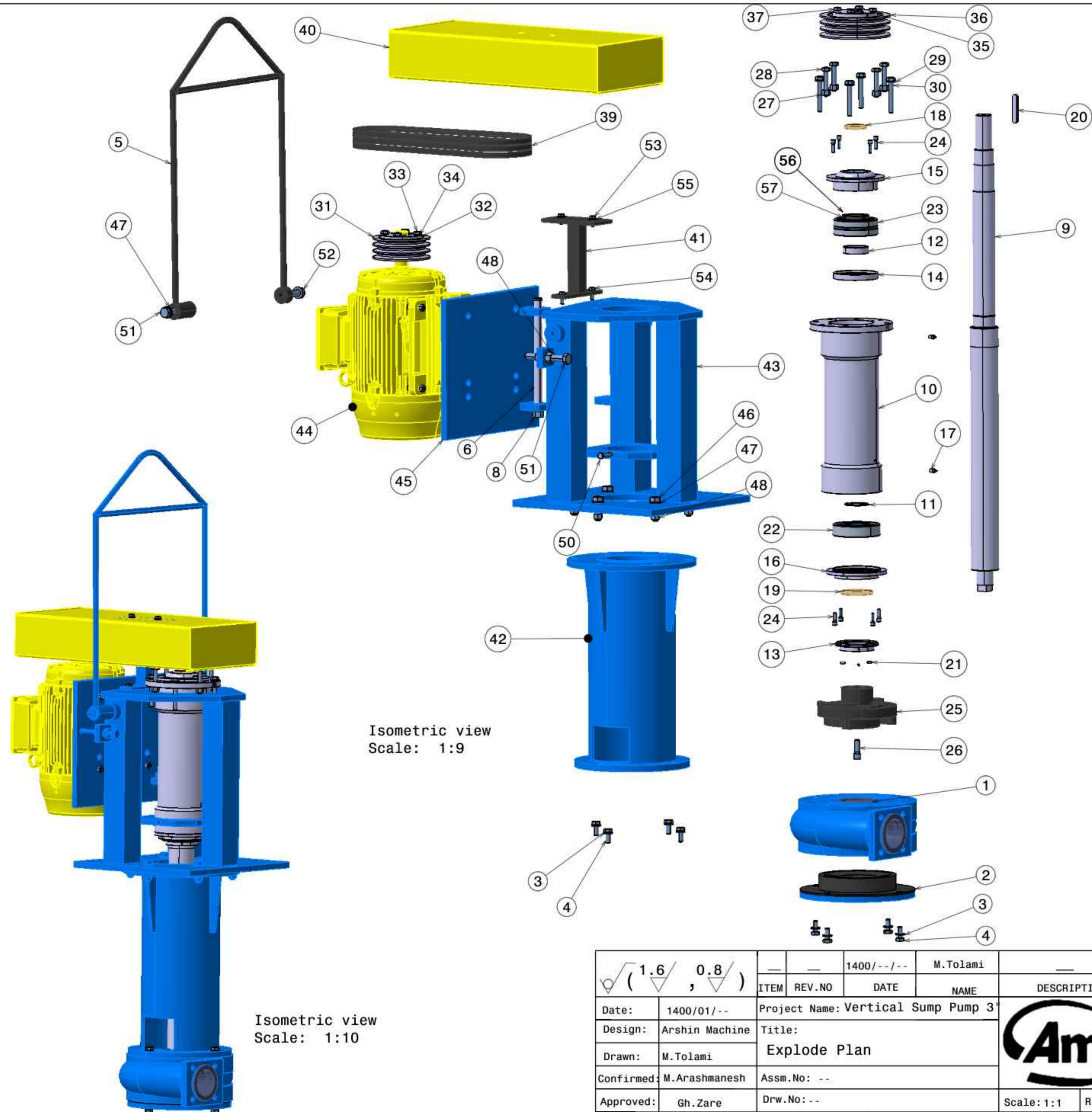


57	Lock Washer MB13	1	DIN5406
56	Lock Nut KM13	1	DIN981
55	Washer 12*24	4	DIN125
54	Bolt M12*30	2	DIN933
53	Bolt M12*25	2	DIN933
52	Bolt M20*70	1	DIN933
51	Bolt M20*120	1	DIN933
50	Bolt M20*150	1	DIN933
49	Bolt M12*50	1	DIN933
48	Nut M20	8	DIN934
47	Washer 20*37	8	DIN125
46	Bolt M20*60	6	DIN933
45	Base Motor	1	St37
44	Electromotor 11kw 1470rpm	1	
43	Drive Base	1	St37
42	Support Pipe 273 650	1	St37
41	Base Guard	1	St37
40	Guard	1	St37
39	Belt B55	3	DIN2217
38	Washer 12*24	4	DIN125
37	Bolt 1/2*40	4	ASME B18.4
36	Pulley 220 3VB	1	GG25
35	Bush Pulley 140 50 53	1	GG25
34	Washer 12*24	4	DIN125
33	Bolt 1/2*40	4	ASME B18.4
32	Bush Pulley 127 42 41	1	GG25
31	Pulley 180 3VB	1	GG25
30	Bolt M16*100	4	DIN933
29	Washer 16*30	4	DIN125
28	Bolt M16*80	4	DIN933
27	Nut M16	4	DIN934
26	Screw M16*45	1	DIN912
25	Rubbered Impeller 248 118	1	NR+GGG40
24	Screw M10*30	8	DIN912
23	Bearing 22313	1	Nachi
22	Bearing Nu314	1	Nachi
21	Set Screw M6*20	3	DIN913
20	Key 14 9 80	1	St37
19	VRing VA90	1	NR
18	VRing VS60	1	NR
17	Grease Nipple 10	2	DIN71412
16	Down End Cover 188 95 28	1	GG25
15	Up End Cover 183 62 55	1	GG25
14	Grease Retainer 139 85 18	1	GG25
13	Labyrinth 137 89 24	1	GG25
12	Bush 80 65 20	1	St52
11	Retaning Ring S 70	1	DIN 471
10	Bearing Housing 150 530	1	GG25
9	Drive Shaft 89 1497	1	Ck45
8	Nut M20	1	DIN934
7	Washer 20*37	1	DIN125
6	Pin 30 370	1	St37
5	Handel	1	St37
4	Bolt M16*35	8	DIN933
3	Washer 16*30	8	DIN125
2	Lining Cover Inlet 360 140 59	1	NR+GG25
1	Lining Casing VSP3	1	NR+GG25
Item No.	Part Name	QTY	Material/S standard



√ (1.6 / , 0.8 /)		1400/--/--	M.Tolami		
ITEM	REV.NO	DATE	NAME	DESCRIPTION	
Date:	1400/01/--	Project Name: Vertical Sump Pump 3'			
Design:	Arshin Machine	Title:			
Drawn:	M.Tolami	Explode Plan			
Confirmed:	M.Arashmanesh	Assm.No: --			
Approved:	Gh.Zare	Drw.No: --			
Dimension Tolerances:		Material: --	Weight: -- kg	Scale: 1:1	Rev: 00
ISO 2768-f		Dimentions : mm	Qty: 01	Size: A3	Sheet: 01/10

