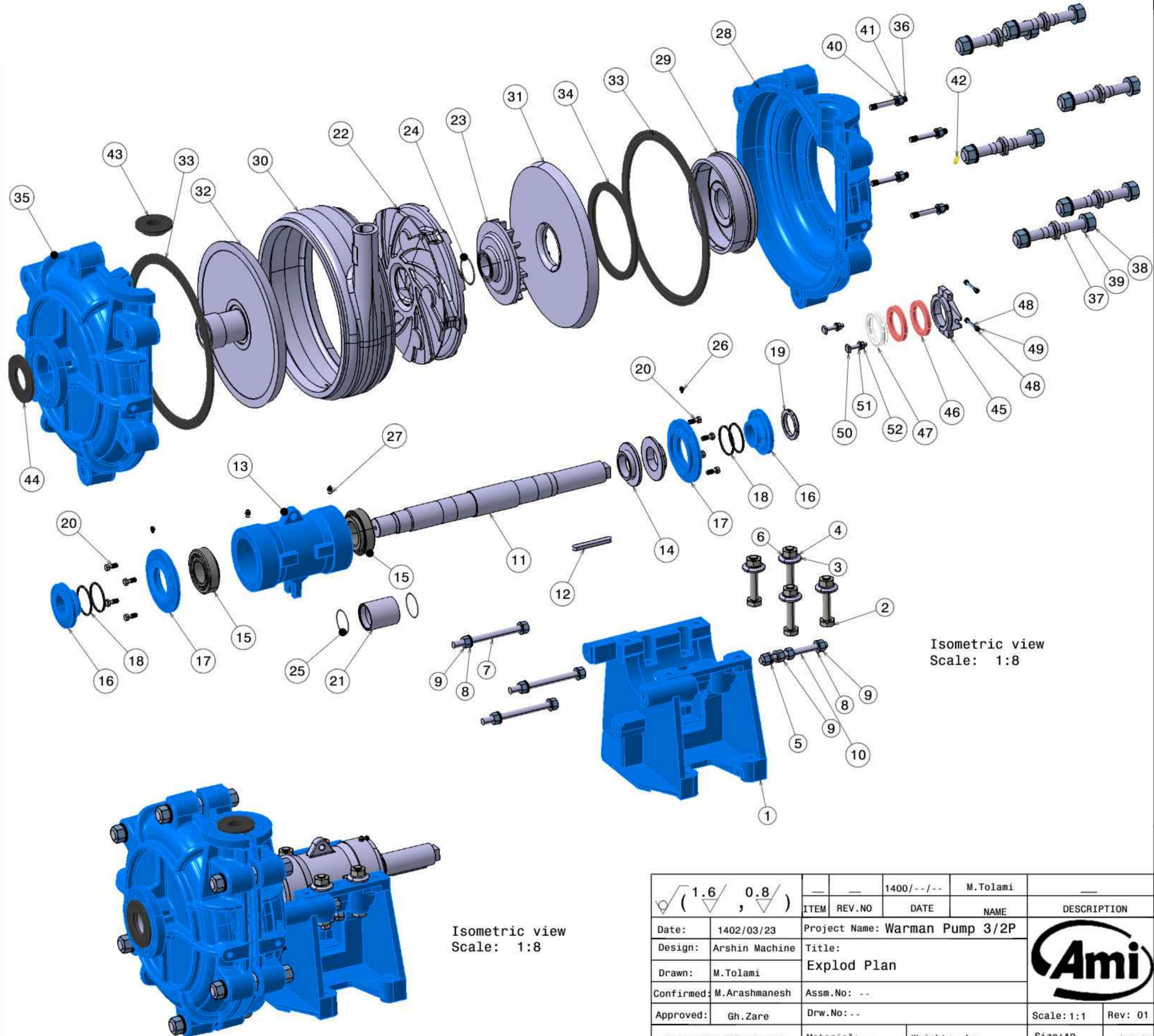


52	Nut M12	2	DIN934
51	Washer 12*24	2	DIN125
50	Gland Bolt 30 65	2	Mo40
49	Nut M8	2	DIN934
48	Bolt M8*70	2	DIN933
47	Lantern 108 84 21	1	St52
46	Packing 12*12	2	Cotton
45	Gland 107 74 13	2	GG25
44	Intake Joint Ring 144 74 8	1	NR
43	DissCharge Joint Ring 110 50 25	1	NR
42	hose adapter 10	1	St37
41	Nut M16	4	DIN934
40	Washer 16*30	4	DIN125
39	Washer 30*56	12	DIN125
38	Nut M30	12	DIN934
37	Cover Bolt 54 263	6	Ck45
36	Bolt M16L120	4	Din976
35	Cover Plate 3/2P	1	GGG40
34	Expeller Ring Seal 294 254 14	1	NR
33	Volute Seal 533 480 10	2	NR
32	Throat Bush 508 30	1	Hi-Cr
31	Frame Plate Liner Insert 508 32	1	Hi-Cr
30	Volute 3/2P	1	Hi-Cr
29	Expeller Ring 108 306	1	Hi-Cr
28	Frame Plate 3/2P	1	GGG40
27	Grease Nipple 10	2	DIN71412
26	Grease Nipple 6	2	DIN71412
25	ORing 76*3	2	NR
24	ORing 86*5	1	NR
23	Expeller 255 70 55	1	Hi-Cr
22	Impeller 473 124	1	Hi-Cr
21	Bush Sleeve 83 70 95	1	St37-200 micron Chrome
20	Bolt M12*35	8	DIN933
19	Lock Nut 92 70 12	1	St52
18	Labyrinth Ring 90 83 3	4	GGG40
17	End Cover 191 90 32	2	GG25
16	Labyrinth 136 71 46	2	GG25
15	Bearing 645 632	2	Koyo
14	Grease Retainer 133 72 26	2	GG25
13	Bearing Housing 136 306	1	GG25
12	Key 18*11*130	1	DIN6885
11	Drive Shaft 79 783	1	Ck45
10	Bolt M20L220	1	DN976
9	Nut M20	10	DIN934
8	Washer 20*37	7	DIN125
7	Bolt M20L250	3	DN976
6	Spring Washer 24	4	DIN127
5	Washer 35 21 5	2	ST37
4	Nut M24	4	DIN934
3	Clamp Washer 67 25 10	4	St37
2	Bolt M24*140	4	DIN931
1	Frame 291 194	1	St37
Item No.	Part Name	QTY	Material/ Standard



Isometric view
Scale: 1:8

Isometric view
Scale: 1:8

ITEM	REV.NO	DATE	NAME	DESCRIPTION
Date: 1402/03/23		Project Name: Warman Pump 3/2P		
Design: Arshin Machine		Title: Explod Plan		
Drawn: M.Tolami		Assm.No: --		
Confirmed: M.Arashmanesh		Drw.No: --		
Approved: Gh.Zare		Scale: 1:1		Rev: 01
Dimension Tolerances: ISO 2768-f		Material: --	Weight: -- kg	Size: A2
		Dimentions : mm	Qty: 01	Sheet: 01/01