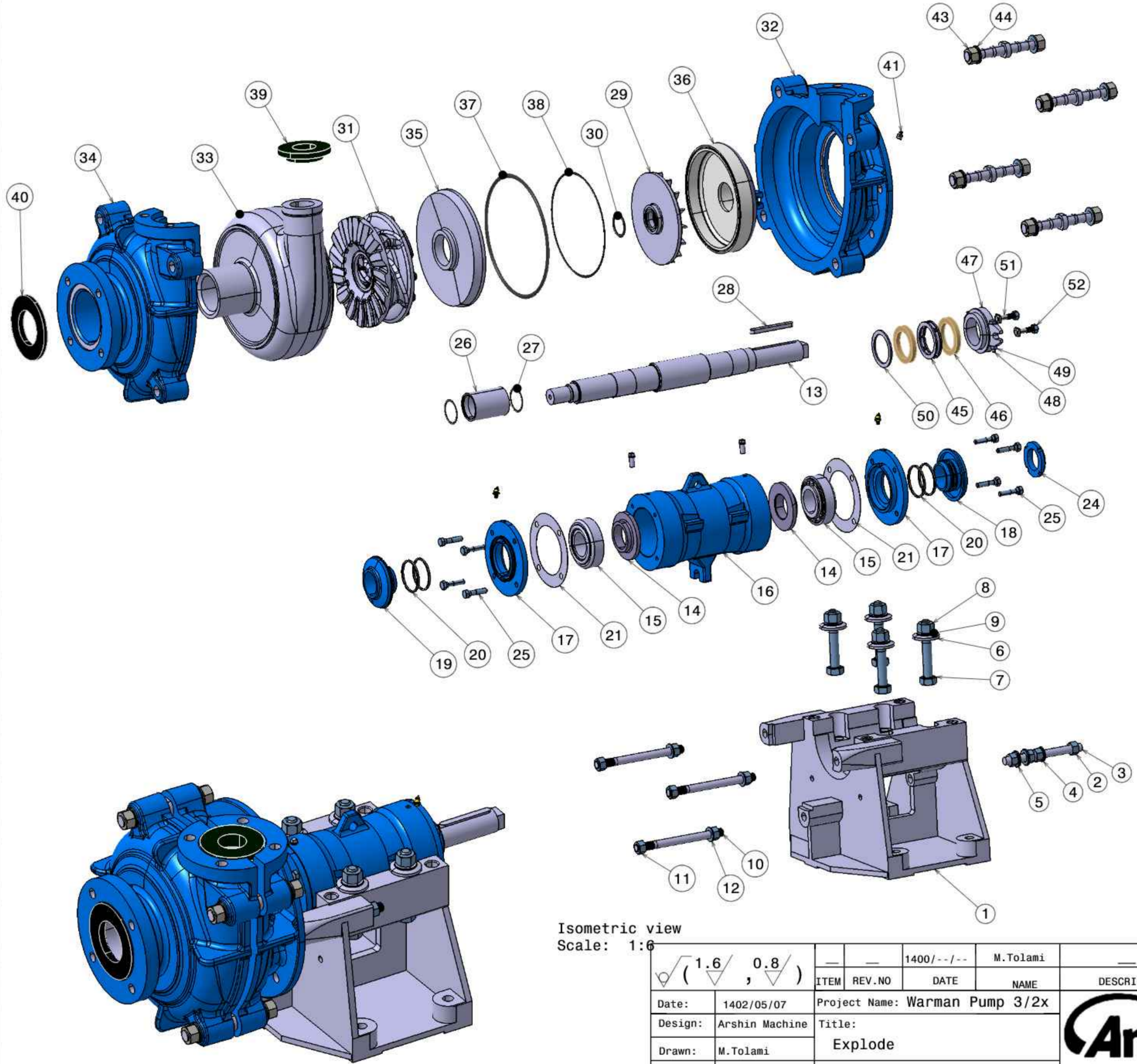


52	NUT M10	2	DIN 934
51	Gland Bolt 25 52	2	Mo40
50	Neck Ring 77 60 3	1	ST52
49	Nut M8	2	DIN 934
48	Bolt M8x70	2	DIN 933
47	Gland 77 58 10	2	GG25
46	Packing 10*10	2	Cotton
45	Lantern 77 60 14	1	ST52
44	Washer 20*37	8	DIN125
43	Nut M20	8	ST37
42	Cover Bolt 35 180	4	Ck45
41	Grease Nipple 10L30	1	DIN71412
40	Intake Joint Ring 144 74 8	1	NR
39	Disscharge Joint Ring 110 50 25	1	NR
38	ORing 218*3	1	NR
37	O-Ring 260*7	1	NR
36	Expeller Ring 189 78	1	Hi-Cr
35	Frame Plate Liner Insert 245 25	1	Hi-Cr
34	Cover Plate 3/2	1	GGG40
33	Volute 3/2	1	Hi-Cr
32	Frame Plate 3/2	1	GGG40
31	Impeller 230 93	1	Hi-Cr
30	ORing 50*5	1	NR
29	Expeller 192 47 28	1	Hi-Cr
28	Key 12 8 90	1	DIN6885
27	ORing 53*4	2	NR
26	Bush Sleeve 59 48 80	1	ST52 -200 micron chrome
25	Bolt M10x35	8	DIN933
24	Lock Nut 73 46 11	1	ST52
23	Grease Nipple 6	2	DIN71412
22	Grease Nipple 10	2	DIN71412
21	Shim Set 154 103	2	Brass
20	Labyrinth Ring 67 61 3	4	GGG40
19	Labyrinth 108 46 50	1	GG25
18	Labyrinth 108 50 41	1	GG25
17	End Cover 156 67 29	2	GG25
16	Bearing Housing 102 254	1	GG25
15	Bearing 522 529	2	Koyo
14	Grease Retainer 99 51 20	2	GG25
13	Drive Shaft 60 605	1	Ck45
12	Washer 16x30	3	DIN125
11	Nut M16	6	DIN934
10	Bolt M16L210	3	DIN976
9	Spring Washer 20	4	DIN127
8	Nut M20	4	DIN934
7	Bolt M20x120	4	DN931
6	Clamp Washer 57 21 8	4	ST37
5	Washer 37 20 4	2	St37
4	Washer 16*30	1	DIN125
3	Bolt M16L180	1	DIN976
2	Nut M16	4	DIN934
1	Frame 241 159	1	ST37
Item No.	Part Name	QTY	Material/Standard



Isometric view  
Scale: 1:5

Isometric view  
Scale: 1:6

ITEM	REV.NO	DATE	NAME	DESCRIPTION
Date: 1402/05/07		Project Name: Warman Pump 3/2x		
Design: Arshin Machine		Title: Explode		
Drawn: M.Tolami		Assm.No: --		
Confirmed: M.Arashmanesh		Drw.No: --		
Approved: Gh.Zare		Scale: 1:1		Rev: 00
Dimension Tolerances: ISO 2768-f		Material: --	Weight: --kg	Size:A3
		Dimentions : mm	Qty:01	Sheet:01/10